



# December 2010

Sun	Mon	Tue	Wed	Thu	Fri	Sat
			1	2 Minyan 7:15AM Followed by Break-fast	3 Maariv Shabbat followed by Dinner 6:30PM	4 Children's Service 10:30 Ladies Lesson after Lunch
5 Hebrew and Torah Classes for Children Children's Hanukah Party 10AM	6 Minyan 7:15AM Followed by Break-fast	7 Rosh Chodesh 1 Hanukah Party Synagogue 6PM	8 Rosh Chodesh 2	9 Minyan 7:15AM Followed by Break-fast	10 Maariv Shabbat followed by Dinner 6:30PM	11 Children's Service 10:30 Ladies Lesson after Lunch
12 Hebrew and Torah Classes for Children	13 Minyan 7:15AM Followed by Break-fast	14	15	16 Minyan 7:15AM Followed by Break-fast	17 Maariv Shabbat followed by Dinner 6:30PM	18 Children's Service 10:30 Ladies Lesson after Lunch
19 Hebrew and Torah Classes for Children	20 Minyan 7:15AM Followed by Break-fast	21	22	23 Minyan 7:15AM Followed by Break-fast	24 Maariv Shabbat followed by Dinner 6:30PM	25 Children's Service 10:30 Ladies Lesson after Lunch
26 Hebrew and Torah Classes for Children	27 Minyan 7:15AM Followed by Break-fast	28	29	30 Minyan 7:15AM Followed by Break-fast	31 Maariv Shabbat followed by Dinner 6:30PM	



## SUPPORT YOUR JEWISH ASSOCIATION OF THE PHILIPPINES

Do you know that membership in the Jewish Association of the Philippines only costs **PHP18,000** per year for a family and **PHP14,000** per year for singles? Do you know that this small amount goes to paying for all the Shabaton lunches, dinners, events, salaries, lights, maintenance and up-keep of the building. And in addition to all this, your Jewish Association does a lot of charity work.

## VISIT YOUR SYNAGOGUE

We are WIFI. Come in, browse the library, have coffee and surf the net.

## JEWISH ASSOCIATION OF THE PHILIPPINES

110 H. V. Dela Costa Street  
Salcedo Village, Makati City  
Philippines

Tel: (632) 815-0265

Fax: (632) 840-2566

Website: [www.jewishphilippines.org](http://www.jewishphilippines.org)

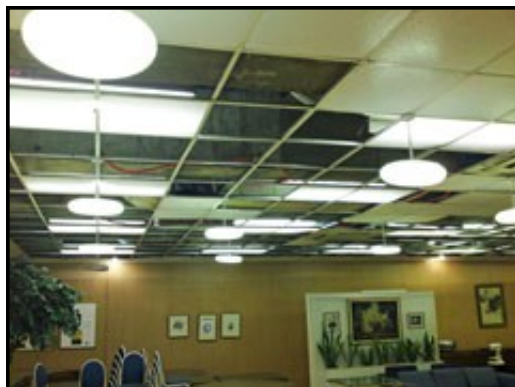
Email: [admin@jewishphilippines.net](mailto:admin@jewishphilippines.net) (John Kater)  
[president@jewishphilippines.net](mailto:president@jewishphilippines.net) (Paul Rosenberg)  
[rabbi@jewishphilippines.net](mailto:rabbi@jewishphilippines.net) (Rabbi Azaria)

		Civil Birthday	Hebrew Birthday	This Years Civil Date
WANG	UZI	December 5	Kislev 25	December 2
FRYSZER	EMANUEL	December 8	Kislev 29	December 6
HUGHES	MARIA	December 9	Kislev 24	December 1
GILAN	MARLYN	December 13	Kislev 25	December 2
SCHULTZ	RACHEL	December 17	Kislev 28	December 5
DAYAN	DANEL	December 19	Tevet 2	December 9
DJEMAL	SIGALIT	December 23	Tevet 7	December 14
OFEK	ITSHAK	December 23	Kislev 26	December 3
ELEFANT	DAVID	December 30	Tevet 7	December 14

## Upcoming Kiddush's

January 1	Malca Families	In Memory of Their Parents
January 8	Minc Family	Esther's Bat Mitzvah
January 15		
January 22		
January 29	Kohler Family	Michael's Birthday

Please check Bulletin Board outside of Social Hall for future available Dates. All Kiddush bookings are on a first come first serve basis. Upon booking please choose your menu.



Ongoing Maintenance



Monthly Bazaars at the American Women's Club and Legasi Village



Preparing the Turkey for the Shabbaton with a Thanksgiving Theme



# Education at our Synagogue

## Sunday Ulpan

The New Sunday School has exceeded all of our expectations. Many more children are attending than we anticipated. The children are learning Hebrew and Torah and Bible stories, and about Judaism. We wish to thank all the parents who are helping in this endeavor.



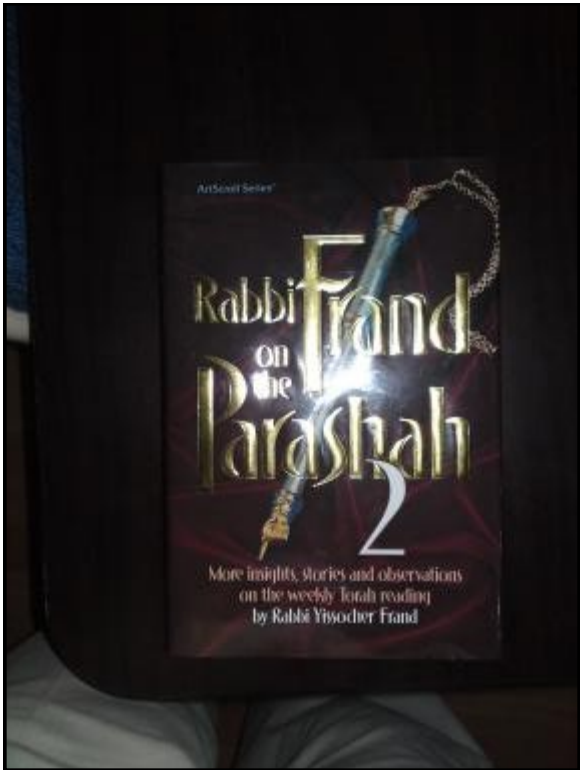
## Weekday Kindergarten

The Gan since it's start in July has been teaching the children many skills. Depending on their age, they learn motor skills as well as learning skills. Their English and Hebrew is rapidly improving. They are learning Torah and Bible stories. Below is the first parent-teachers meeting.



## BOOKS FROM OUR LIBRARY

Every month we will review a book which is in our library. We encourage everyone to use our library. According to Rabbi Talmid, we have the largest library in Southeast Asia. It is here for your reading and learning pleasure.



### RABBI FRAND ON THE PARASHAH 2

Noted for his wit, wisdom, and elocutionary excellence, **Rabbi Yisroel Frand** is known throughout the world as a masterfully clear teacher of Torah. Wherever he speaks, rooms are filled to capacity. And as he speaks, the audience sits transfixed, absorbed, drinking in each carefully crafted phrase.

As a rosh yeshiva at Baltimore's Yeshivas Ner Israel, Rabbi Frand educates hundreds of students and inspires to hold aloft the beacon light of Torah to a searching Jewish world. His depth and breadth of Talmudic and halachic analysis have earned him the esteem of great Torah leaders.

Over the years, Rabbi Frand's name has become closely associated with his thoughts on the weekly parashah - the portion of Torah studied weekly by Jews across the globe. Through his famed Parsha Perceptions Series, Rabbi Frand's message reaches thousands of listeners each week.

Public response to the first volume of Rabbi Frand on the Parashah was strong. Readers wanted more. Drawing from the vast reservoir of Rabbi Frand's teachings, this second volume is sure to satisfy readers' earnest and eager appetite for more wisdom from one of Torah Judaism's finest of teachers, and these provocative insights are certain to enhance Shabbos meals and celebrations throughout the year.

## JOIN US FOR MONDAY AND THURSDAY MINYANS



**We are pleased to announce that, as a special service for visitors and for local residents kosher meals can now be ordered for consumption at the synagogue or for "take away"**

**Orders should be placed one day before they are required.**

**The following menu is currently available**

**MEAT**

Whole Chicken Roasted/baked (Price per Kilo)	480.00
Chicken (breast) Schnitzel (good for two people)	370.00
Baked Chicken Leg (good for two people)	350.00
(All meat dishes are served with a choice of potatoes or rice)	

**PARVE (per person)**

Fried Asuhos with Rice or Potato	280.00
Tuna Salad	95.00
Falafel	170.00

**DAIRY**

Medium Size Pizza with Shredded Mozzarella Cheese & Tomato Sauce	225.00
Large Pizza with Black Olives, Sliced Onions, Sliced Tomato, Tomato Sauce & Mozzarella Cheese	370.00

**VEGETABLES (per person)**

	25.00
Carrots	40.00
Zuchini	70.00
Bunch of Asparagus	210.00
Humus	225.00
Mixed Roast Vegetable	

**SALADS (per person)**

Israeli Salad	100.00
Tabouli	165.00

**SANDWICHES**

Pita Sandwiches (with Sliced Cheese, Tomato Cucumber & Pickles)	80.00
with egg	90.00
Lachmaniot (with Cream Cheese, Tomato, Cucumber & Pickles)	100.00
Lachmaniot Meatburger (with Mustard, Mayonnaise, Sliced Tomato & Pickles)	100.00
Pita Meatburger (with Sliced Onions, Pickles, Tomato, Mustard & Mayonnaise)	110.00
Tuna Sandwich	110.00

## AVON HAS MOVED

Since the early 1980's, when the new Synagogue was opened in Makati, the building the Synagogue was in has been rented by Avon. We have been very fortunate that for all these years the rental was able to cover most of the Synagogue's overhead. As of December 1, they left. We are actively trying to rent the building. In the meantime, we need all the help we can get. We need families and individuals who are not members to join. We will annualize all membership dues to begin January 1, 2010. If you have paid already for part of 2010, we will pro rate. But all dues will begin starting January 1. Please also update all of your membership information including birthdays, anniversaries, Yahrzeits. Any help we can get to rent the building will be greatly appreciated. Information is below.

**Location: 1963 Taft Avenue Corner of Quirino Avenue**



**Floor Area: 1,500 sqm over 2 floors**

**Building available from December 1,2009. There is parking in the front of the building.**

**For BPO/Call Center it can seat 330.**

**Located conveniently near many Universities, like dela Salle.**